

CHAIRMAN
Joe Shoemaker

VICE CHAIRMAN/
TREASURER
Ted Bendelow

William Avery
Bill DeGroot
Edna Doyle
Carol Gossard
Marjorie Hornbein
Glenda Lyle
Philip Milstein
Jack Shapiro
Judith Wray
John Zapien

MAYOR OF DENVER
Federico Pena

EXECUTIVE DIRECTOR
Jeff Shoemaker

"A
river
is more than
an amenity,
it is
a
treasure."
Justice Wm. O. Douglas

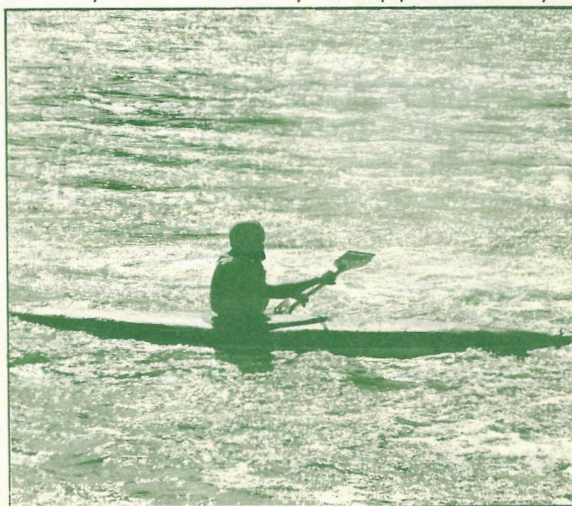


THE
GREENWAY
NEWS

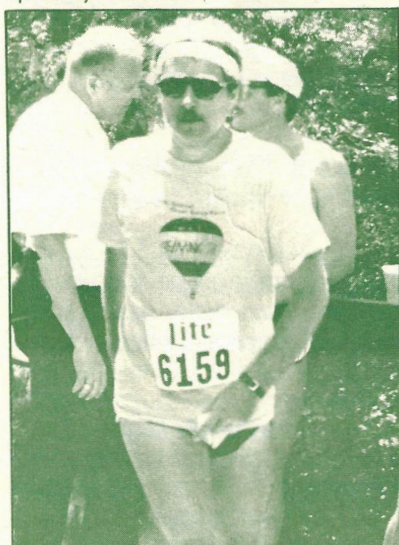
Vol. 6, No. 1
Spring 1984

A Day on The Platte in June (5th Annual Great Relay Race) Get Your Teams Ready For a Day Full of Fun

Work is progressing very well since late fall of 1983 on the 5th Annual Great Relay Race to benefit Denver's Platte River Greenway. This event has been sponsored by The Greenway for approximately nine years, but the actual underwriting of sponsors and officialdom started five years ago. We are hosting the event this year on June 10, from 9:00 a.m. until 3:00 p.m. The race will start at three major locations circling the Metro area: Race course #1 will be the Cherry Creek Course and it will start at Cherry Creek State Recreation area; Race course #2 will begin at Chatfield State Recreation Area; and Race course #3 will begin at Barr Lake State Recreation area. All races culminate at Confluence Park located at 15th Street and The Platte River. The timing of the starts will be coordinated by the volunteers from the "Golden Wings Radio Club" and our good friends at the Environmental Protection Agency. We expect the first racers to come across the finish line at approximately two hours after the start and perhaps one of the six superstars in the race this year will surprise us with a faster time than that.



This unique and popular race continues to be a great deal of fun in the sun with everybody enjoying the recreational corridor provided by the Greenway Foundation over the last ten years. We now have teams that have been in this event since the first race put together nine years ago. All are hoping to get their hands on those traveling trophies supplied generously by Miller-Lite Beer. We are anticipating about 75 teams this year, or a total of 750 contestants making their way down to Confluence Park on the day of the race. There will be an added incentive this year of arriving quickly at Confluence to take advantage of a free lunch being provided by the McDonald's Corporation.



The terrific sponsors who make this DAY ON THE PLATTE IN JUNE possible for the Greenway Foundation and the contestants are as follows:

- First Interstate Bank of Denver
- Miller Lite Beer
- Pants and Duds, Ltd/Splash
- KBPI Radio

The beneficiary of the race continues to the South Platte River Greenway Foundation with a percentage of all proceeds assisting it's general fund for operation of this ten miles of improvement along the South Platte River.

1984 marks the tenth year of this project and the celebration of a DECADE OF DIFFERENCE. This wonderful resource continues to be a source of pleasure and recreation for thousands of people. We

hope that you will all come down to Confluence Park and enjoy food, continuous music and the air of excitement and competition on June 10, 1984. For additional information, please call 753-9077.

Activities Abound Along The Greenway

As our weather begins to improve, and our sun filled days continue to lengthen, The Greenway has organized several enjoyable activities geared to bringing you down to the River for a summer loaded with fun!

—"Concerts on the Green" for 1984 are set and ready to entertain you on the last Wednesday evening of June, July, and August. Wednesday, June 27th kicks off our fifth season of these free, quality concerts with IMAGES, a widely known, Denver based jazz group, who have just recorded their first album. We join with our sponsor for the evening, MILE HIGH LAND ASSOCIATES, in urging you not to miss this superb jazz extravaganza.

On Wednesday, July 25th, FIRST COLORADO BANK AND TRUST will host our classical concert, featuring the U.F.O. (Union Freelance Orchestra). This ensemble, made of the top union musicians in the area, will feature an evening of pops and light classical favorites. Additional funding provided by M.P.T.F.

Our final concert of this unique series, held on Wednesday, August 29th, will take on a new direction for 1984. Hosted by KENNY ELECTRIC SERVICES, INC., we will be bringing you an evening of country-western music featuring TIMOTHY P. AND THE RURAL ROUTE 3. Known throughout Colorado, this highly entertaining group promises to close out this year's "CONCERTS ON THE GREEN" on an exciting note!

*All concerts are free to the public, and will be held at the Confluence Park Amphitheatre, beginning each evening at 6:30 PM. Pepsi-Cola Bottling Co. of Denver will provide free drinks at all three concerts. Please note the dates and times on your calendar now. Bring family and friends, a picnic dinner, a bottle of wine, and treat yourself to an evening of great music at one of Denver's most beautiful concert sites.

— With the addition of our new white-water boat chute at 3rd Avenue, the South Platte River in Denver will be an even greater boating experience. A non-stop excursion from Alameda Avenue to Denver's north city limits will be possible and the raft, kayak, and canoe enthusiast will enjoy passage through several notched check-dams, as well as our four white-water boat chutes. The Greenway is working with several river tour companies to continue their offers of 1/4, 1/2, and full day tours down the River via 8-man rubber rafts. For further information on how you can experience first-hand the exciting South Platte River via one of these tours, contact The Greenway at 698-1322.

— Mid-day tours of the Platte River Greenway are still available. Zang's Brewing Co. and The Greenway have joined forces for another summer season to offer you the following:

- a) A tour of your River, it's open-space parks, and hiker-biker trail, via a Zang Brewing Co. bus.
- b) A detailed explanation of the history, current efforts, and future of this unique success story.
- c) A marvelous and economical lunch at Zang's following the tour.

Cost of the tour:

- a) \$50.00 (per group tour) tax-deductible donation to the Platte River Greenway Foundation.
- b) \$7.50 (per person) for a variety of lunch entrees (tax and tip included) (options on lunch available).

This fun and exciting opportunity is available for groups of 25-50 people. For further information on how to arrange for your group to share in the innovative and exciting Platte River Greenway, contact the Greenway Foundation at 698-1322.

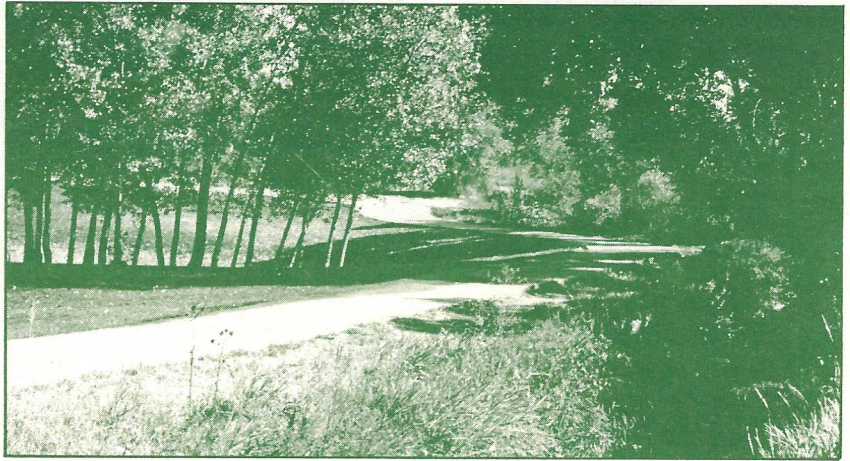
— Our "Friends of the River" Party will be held once again at the Chili Pepper restaurant. We've tentatively set the date for Sunday, September 9th at 4:00 P.M., with our alternative date being the following Sunday, September 16th. (Please set both dates on your calendar. Once the date is confirmed, you will be notified.)

This annual celebration pays tribute to the special friends of the Platte River Greenway. Cocktails, live music, and a marvelous buffet dinner are all part of the evening, with the highlight being the presentation of the 1984 "Friends of the River" Awards. The awards are given each year to any such individual or organization making an extraordinary contribution toward the enhancement of the Platte. If you have a candidate in mind as a potential recipient of a "Friends of the River" Award, please send your suggestion to the Greenway Foundation for consideration by the Board of Directors. Your suggestions must be received by June 1st, 1984.

Put Yourself in This Beautiful Picture

In looking at this photograph, one could be walking down a trail in the upper peninsula of Michigan or the Rocky Mountains in late summer. In reality, however, it is a section of trail recently completed by the Adams County Trails and Open Space Foundation with assistance of the Community Development Office of Adams County. Developed as a prototype project off of the Denver Greenway and designed as a comprehensive hookup to the north terminus of the Greenway project in Denver, the Adams County Greenway is a rural experience along the South Platte River, not often available in a metropolitan area the size of Denver. It is very common to see deer, fox, and other wildlife along this trail and in the design and development of this project in Adams County, The Trails Foundation realized the very different rural nature of their segment of trail.

Plans are now underway to make a three mile hookup to the Denver Greenway from the confluence of Clear Creek and the Platte and will add some six miles of close-in recreation, both on the trail and on the adjacent parks along the South Platte River as it proceeds toward Barr Lake and west up Clear Creek. This is one of the segments that will be traversed by the Great Relay Race in June of this year to further acquaint people with these beautiful amenities now available.



For more information about the Adams County Greenway and their eventual plans, please contact Mason Consulting Group, 1776 South Jackson, Suite 1102, Denver, Colorado 80210 (303) 753-9077.

1984 Membership Drive (Help Us Reach Our Goals)

Many of you have generously sent in your Annual Membership to The Greenway. Your support is vital to the success of our on-going efforts to provide your River area with needed improvements, quality maintenance via our Trail Ranger program, and the many special events offered during the summer season.

If you have donated already for 1984, we thank you, and have hopefully responded to your generosity personally by now. For those of you who have yet to donate in 1984, we encourage you to continue your support of the past several years. In return we will provide you with the following:

— A 1984 Platte River Greenway Foundation Membership Card. This card entitles you to a 20% discount on dinner and spirits for up to four people at Zang's Brewing Co. The offer applies to any one evening, anytime during 1984.

— You will also continue to receive this Newsletter, printed again in July and November, as well as all notices of upcoming special events held along The Greenway during 1984.

Please fill out the membership application on the back page of this Newsletter. If you are already a member, a gift-membership to a friend or family member is a unique and very special gesture.

Finally, we encourage assistance in helping our Greenway family expand. Please fill out the bottom half of the back page application form with the name of a friend or associate that might be interested in becoming a member. The continued improvement of one of Denver's oldest and most important amenities depends on you.

Progress Report For The Master Planning of South Platte River

By

Ben Urbonas, Chief, Master Planning Program
Urban Drainage and Flood Control District

The Urban Drainage and Flood Control District's Major Drainageway Planning Study for South Platte River, between Chatfield and Brighton, is progressing right on schedule. The draft Phase A report, submitted at the end of March, will permit an editorial and content review by the District and the participating local sponsors. The Phase A report will also contain technical information and back-ground materials concerning water rights, river geomorphology, the high and low river flows, existing and potential recreational opportunities, water quality and gravel mining activities. The Phase A report is the first report ever printed to address, in a comprehensive fashion, the South Platte River's existing and potential uses, problems and opportunities in the Denver Metropolitan Area.

We are very pleased with the progress of the study to date and with the work performed by our consultants. This is the largest major drainageway planning project undertaken by the Urban Drainage and Flood Control District. I want to acknowledge the cooperation and support provided to us by all of the project sponsors, including The Greenway, and all the project advisors. The success, to-date, of this project could not have been possible without the team spirit that has prevailed among all of the participants and advisors.

The next step will be for all the project sponsors to evaluate the information in the Phase A report and to select alternates for flood control and recreation for the South Platte river. That decision will be very significant. It will provide direction for the development of the South Platte River and how it should be managed for flood control, water resources, and recreational uses for many years in the future. The final master plan report, which will be published in 1985, will provide a "road map" that will guide and influence the Denver Metropolitan area in how this very valuable and important resource is utilized and preserved for residents of this region.

If you wish The Greenway to include your name as one who wishes to receive regular reports, in the form of a Newsletter, of the continuing Master Plan project, contact The Greenway. Your name and address will be forwarded to Urban Drainage and Flood Control District.

Platte River Greenway Offers Many Uses To Metropolitan State College Population

Athletic, recreational and personal usage are the three most common manners in which students, faculty and staff from Metropolitan State College utilize the nearby Platte River Greenway.

The Roadrunner cross country and track teams train regularly along the running paths on different portions of the bike trail, and cross country runners from Metro alone logged more than 10,000 miles in training using Greenway facilities in 1983. The Roadrunner track team also uses the Greenway for training in the spring.

Metro's Department of Campus Recreation and Intramurals conducts two recreational runs using Greenway facilities each year; the Thanksgiving Turkey Trot and the Spring Sprint, held every Good Friday. In addition, Campus Recreation also sponsors the annual Muskrat Regatta along the South Platte River from the Bronco Bridge to Confluence Park. The regatta features recreational boaters trying their luck with a variety of homemade crafts, including those made of inner-tubes and styrofoam.

Metro's students also use The Greenway trails on their own time using the exercise stations up and down the River to supplement their jogging and biking activities. Other Metro campus departments use the Platte River as a living laboratory to conduct scientific experiments and other research.

The Greenway is excited by the ever increasing usage of our parks, trails, and boatable River for these and many other educational purposes. We encourage all citizens and working professionals in the downtown area to take advantage of the many recreational, scientific, and cultural amenities The Greenway has to offer.

Clean-A-Thons Along The Greenway

A weekend of cleaning and walking along the Platte River Greenway will occur on Saturday, May 5th, and Sunday, May 6th. Kicking off this exciting and beneficial two day effort will be the Waldorf School. Students, parents and friends of the School are collecting pledges for each mile of The Greenway trail that is cleared. These valued volunteers will walk the entire 10.5 mile trail system with the hope that this Clean-a-thon will not only beautify the trail while raising money for Waldorf School, but will also help alert the people of Denver to the many opportunities afforded them by the Platte River Greenway.

The Denver Waldorf School is one of 75 such schools nationally, with over 350 world-wide, that follow the curriculum and educational theories of Dr. Rudolf Steiner, who began the first Waldorf School in 1919.

Waldorf Education has been called "artistic" education, with it's students engaging in many artistic activities such as: drawing, painting, modeling, woodwork, needlework, singing, playing musical instruments, acting, speaking, and more. Waldorf Education is also "artistic" in another sense, utilizing various artistic methods to teach the children the "basics:" reading, writing, arithmetic, science, etc. Special emphasis is directed toward the elementary school children to fill the "basic" lessons with artistic activities and stories. Waldorf school feels that the more this concept is used the better the students will learn.

The Denver Waldorf School is located at 735 East Florida Avenue, Denver, 80210. For more information about the Clean-a-thon or Waldorf Education please write or call the Waldorf School at 777-0531.

The following day, May 6th, Rocky Mountain Greenpeace will undertake a similar effort. The international environmental group Greenpeace, best known for its efforts to save the whales and seals, will be holding its 7th annual Walk-a-thon, this year being held along the Platte River Greenway. Registration will be held between 8:00 A.M. and 12:00 Noon, at Frog Hollow Park, at 8th and Zuni. From there the volunteers will walk five kilometers north, to a point just beyond Riverfront Park, located at 19th Street and the River. Turning around, all those involved will conclude their efforts by walking back to Frog Hollow Park. Greenpeace's goal is to focus attention on pollution problems within a city, while making people aware of what a valuable recreational resource they have in the Platte River Greenway.

Prizes are being offered for those walkers who bring in the most money in pledges. The Grand Prize is a breakfast flight for two aboard the hot air balloon, Poverty I. Greenpeace also hopes to add support to its efforts to protect wildlife and promote alternatives to the present use and disposal of hazardous materials.

For more information call Greenpeace at 355-7397. Pledge sheets are available at Greenpeace, KBCO Radio in Boulder, and at all Budget Tapes and Records Stores.

Cub Scouts on The Platte Greenway

The Boy Scouts of America, Denver Area Council, Denver Parks and Recreation, and the Platte River Greenway Foundation are working together in an effort to provide a new inner-city camping experience for all Cub Scouts in metropolitan Denver.

Habitat Park, one of many new Riverside parks along the Platte River Greenway is being considered as the location of a day-camp site for these Scouts between the ages of 8 and 11.

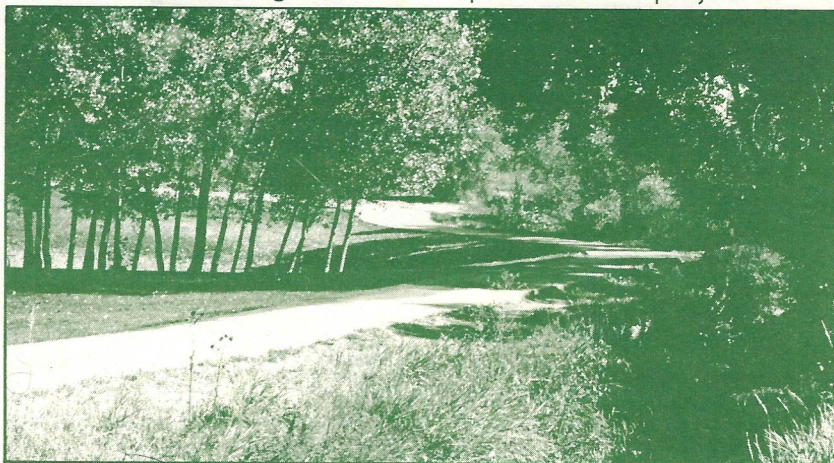
Habitat Park is located just south-west of Alameda and Sante Fe Boulevards. The park would provide camping experiences during daylight hours for hundreds of Cubs, while yet inside the heart of the City and County of Denver.

The Helen K. and Arthur E. Johnson Foundation is just one of several supporters involved in the efforts to renovate Habitat Park for the Cub Scouts. Robert Milton, Executive Director of the Helen K. and Arthur E. Johnson Foundation states, "We feel this is an ideal location for the Cubs and are excited to be involved with this project."

Put Yourself in This Beautiful Picture

In looking at this photograph, one could be walking down a trail in the upper peninsula of Michigan or the Rocky Mountains in late summer. In reality, however, it is a section of trail recently completed by the Adams County Trails and Open Space Foundation with assistance of the Community Development Office of Adams County. Developed as a prototype project off of the Denver Greenway and designed as a comprehensive hookup to the north terminus of the Greenway project in Denver, the Adams County Greenway is a rural experience along the South Platte River, not often available in a metropolitan area the size of Denver. It is very common to see deer, fox, and other wildlife along this trail and in the design and development of this project in Adams County, The Trails Foundation realized the very different rural nature of their segment of trail.

Plans are now underway to make a three mile hookup to the Denver Greenway from the confluence of Clear Creek and the Platte and will add some six miles of close-in recreation, both on the trail and on the adjacent parks along the South Platte River as it proceeds toward Barr Lake and west up Clear Creek. This is one of the segments that will be traversed by the Great Relay Race in June of this year to further acquaint people with these beautiful amenities now available.



For more information about the Adams County Greenway and their eventual plans, please contact Mason Consulting Group, 1776 South Jackson, Suite 1102, Denver, Colorado 80210 (303) 753-9077.

1984 Membership Drive (Help Us Reach Our Goals)

Many of you have generously sent in your Annual Membership to The Greenway. Your support is vital to the success of our on-going efforts to provide your River area with needed improvements, quality maintenance via our Trail Ranger program, and the many special events offered during the summer season.

If you have donated already for 1984, we thank you, and have hopefully responded to your generosity personally by now. For those of you who have yet to donate in 1984, we encourage you to continue your support of the past several years. In return we will provide you with the following:

— A 1984 Platte River Greenway Foundation Membership Card. This card entitles you to a 20% discount on dinner and spirits for up to four people at Zang's Brewing Co. The offer applies to any one evening, anytime during 1984.

— You will also continue to receive this Newsletter, printed again in July and November, as well as all notices of upcoming special events held along The Greenway during 1984.

Please fill out the membership application on the back page of this Newsletter. If you are already a member, a gift-membership to a friend or family member is a unique and very special gesture.

Finally, we encourage assistance in helping our Greenway family expand. Please fill out the bottom half of the back page application form with the name of a friend or associate that might be interested in becoming a member. The continued improvement of one of Denver's oldest and most important amenities depends on you.

Update of Regional Greenway Project

As reported in previous editions of "The Greenway News," the Greenway Foundation received a \$40,000 grant from the Piton Foundation in June of 1983 to design eight trail loops in the metropolitan Denver area, all connecting to the South Platte River. This work was completed this past fall, and the State Legislature appropriated \$300,000 of state lottery proceeds in October toward completion of the first loop trail. This initial addition to the Platte River Greenway trail system will help extend the trail south along the River to Bear Creek, then up Bear Creek to Kipling Street. A bike trail already exists along Kipling Street to Sanderson Gulch, where the trail will be completed back to the South Platte, heading through Ruby Hill Park, and intersecting with the Platte River Greenway Trail at West Florida Avenue and Platte River Drive.

Approximately two-thirds of this loop has previously been built by Denver, Lakewood, the State Highway Department and the Greenway. With the lottery proceeds, \$50,000 from the Helen K. and Arthur E. Johnson Foundation, \$7,000 from the City of Sheridan and \$25,000 from Nolen Construction, the incomplete portions in Sheridan, Lakewood and Denver can be built.

Final design was completed in January of 1984, and a contract for construction was executed with Schmidt-Tiago last month. Completion is scheduled for July 15th, 1984. The South Suburban Park Foundation is building another mile of Platte River Greenway trail from Bates Avenue to Hampden Avenue to complete the loop.

A ribbon cutting-bike parade along the loop is being planned for August 6th, 1984, Colorado Day. Governor Lamm, Legislators, Mayors, Councilpeople, County Commissioners and trail enthusiasts will be participating. Put it on your calendar now, and plan on joining us!

Denver Public Schools and The Greenway Foundation Combine Efforts

The Platte River Greenway, with its many amenities, has a great potential as an educational study unit for elementary school children. The Greenway is historical, environmental, recreational, cultural, and much more. One of our long standing goals has been to move the study and touring of The Greenway into the classroom. With the help of D.P.S. administrators, several elementary principals and teachers, and an innovative U.C.D. graduate class, this goal is already becoming a reality.

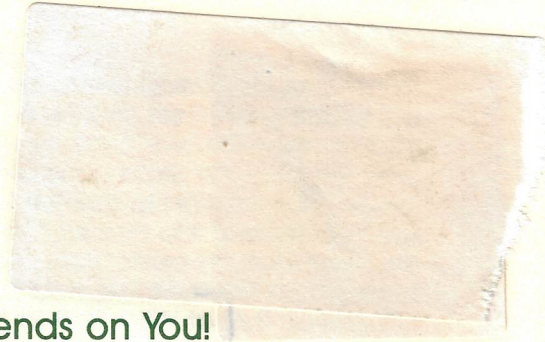
Over the last several months, we have been meeting with various elementary school principals and teachers to present our "blueprint" for involving their students in a "pilot"



classroom study and subsequent field-trip along The Greenway. To assist the teachers in devising various approaches to this goal, we have enlisted the talents of a graduate class from U.C.D. consisting primarily of currently employed elementary school teachers. Under the guidance of Professor Jeff Brigham, on temporary "loan" from Metro State College, these educators will be devising several curriculum guides for those teachers interested in getting their students involved with our study/tour unit. The purpose of the curriculum guides is to assist the "pilot" teachers in devising a viable, realistic means to study the various educational aspects of The Greenway with the follow-up field trip.

The initial "Greenway Study Units" within the pilot schools will begin late this spring or early next fall, whichever the teachers prefer. By the end of October we will have several success stories, complete with pictures, compiled, ready to present to the D.P.S. School Board. We hope to impress upon the Board Members that this type of Platte River Greenway classroom and field trip experience should be a regular part of the elementary school curriculum.

As our "blueprint" develops further, we will keep you updated. We are also confident that as the Greenway expands into the various suburbs, this type of educational program will follow as well.



Making The Platte a People Place Depends on You!

Enclosed is my tax-exempt donation of \$30.00 for Membership in THE GREENWAY FOUNDATION for 1984.

Name

Amount

Address

City

State

Zip Code

Thanks! We can't do it without you!

Please tell us who else might like to become a member of the Greenway Foundation.

Name

Address

City

State

Zip Code

THE GREENWAY FOUNDATION
1666 SOUTH UNIVERSITY BOULEVARD
DENVER, COLORADO 80210
(303) 698-1322

Non-Profit
U.S. Postage
PAID
Denver, Colorado
80202
Permit #489

1984 Greenway Calendar of Events

May 1st
3rd Avenue Boat Chute Dedication

May 28th
Start of the Trail Ranger Program

June 10th
"A Day on the Platte in June"
The Great Relay Race

June 27th
Concert on the Green #1 at
Confluence Park
(Raindate: June 29th)

July 25th
Concert on the Green #2 at
Confluence Park
(Raindate: July 26th)

August 29th
Concert on the Green #3 at
Confluence Park
(Raindate: August 30th)

September 3rd
End of Trail Ranger Program

September 9th
Annual "Friends of the River"
Party at Chili Pepper Restaurant
(Alternate date: September 16th)