

CHAIRMAN
Joe Shoemaker
VICE CHAIRMAN/
TREASURER
Bill DeGroot

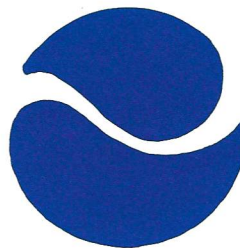
William Avery
Edna Doyle
Carol Gossard
Glenda Lyle
Steve Metcalf
Philip Milstein
Jack Shapiro
Judith Wray
John Zapien

MAYOR OF DENVER
Federico Pena
EXECUTIVE DIRECTOR
Jeff Shoemaker

"A
river
is more than
an amenity,
it is
a
treasure."

Justice Wm. O. Douglas

Vol. 7, No. 1
Spring 1985



THE GREENWAY NEWS

Activities Abound Along the Greenway

Now that warmer spring weather seems to have finally arrived we invite you to get out your calendars and take note of all the opportunities you have to take part in a variety of special activities along your Platte River Greenway.

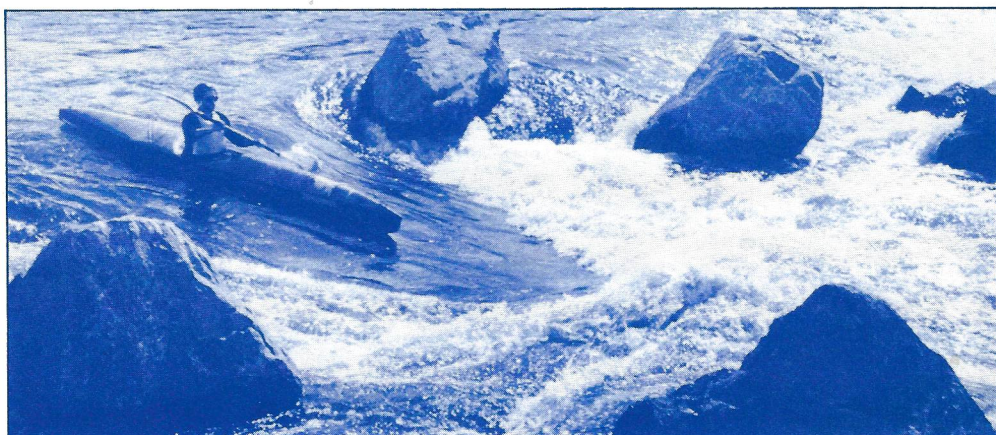
- Over the course of the last several months, another boating obstacle has been removed from the River. Through the funds and efforts of the Colorado Dept. of Highways, the extremely hazardous drop structure between W. Mississippi Ave. and S. Sante Fe Blvd. has been eliminated and replaced with an exciting boatchute.

With this new addition to the many boatchutes and notched check-dams along the River in Denver, the kayak, rubber raft, and canoe enthusiast can enjoy a non-stop boating excursion from W. Florida Ave. to Denver's north city limits and beyond.

The Greenway Foundation greatly appreciates the time and effort put forth by the Dept. of Highways personnel in making this \$70,000 boatchute a reality.

If you would like to take part in a raft trip down the South Platte, but haven't your own raft, contact the Greenway Foundation office for information on 1/4, 1/2, and full day excursions offered by the Arkansas River Tour Co.

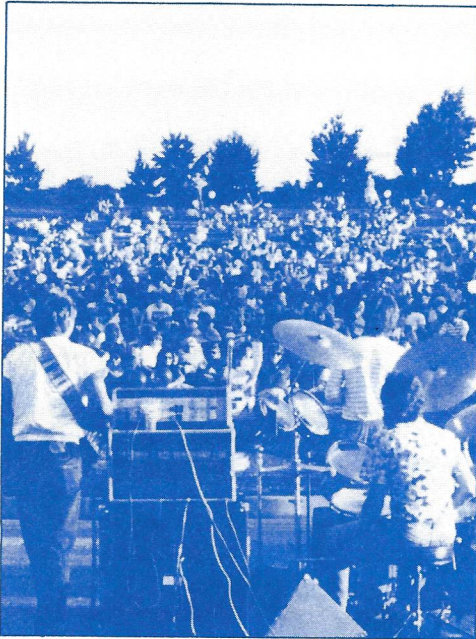
- The 1985 "CONCERTS ON THE GREEN" series is scheduled and promises to continue our tradition of top quality, FREE musical entertainment, held at the magnificent *Confluence Park Amphitheatre*. This year, the Greenway Foundation is excited to announce that *KCNC-CHANNEL 4* and the *ROCKY MOUNTAIN NEWS* will be our media sponsors for the entire concert series.



Wednesday, June 26th kicks off our sixth season of these unique evenings of entertainment with a return engagement of *IMAGES*. Brought back by popular demand, this nationally known Denver based group will present a night of superb jazz, featuring many of the hits from their popular album. *MILE HIGH LAND ASSOCIATES* returns as our primary sponsor of this concert along with *KADX FM - JAZZ 92*. Both sponsors urge all jazz lovers not to miss this rare opportunity to hear this exciting and talented group.

On *Monday, July 29th*, *RIVERSIDE BAPTIST CHURCH* will sponsor an evening of traditional and modern gospel music, featuring *CYNTHIA CLAWSON* with *HARVEST ROAD*. One of our country's best known gospel singers, Ms. Clawson will sing several of the hits from her many albums, and this unique opportunity promises to be a night for the whole family.

Our final concert of this one-of-a-kind concert series, will be held on *Wednesday, August 28th*, and we'll be hosting the ever popular *HOT RIZE*, featuring some of your favorite country western and blue grass favorites. *FIRST COLORADO BANK AND TRUST* returns as our



primary sponsor of this concert along with *KBRQ AM & FM – COUNTRY*. Known throughout the country, this highly entertaining group promises to close out the 1985 "CONCERT ON THE GREEN" series on an exciting "note"!

All concerts are free to the public, and begin at 6:30 p.m., ending approximately at 8:30 p.m. *PEPSI-COLA BOTTLING CO. OF DENVER* will again provide free drinks at all three concerts. Please note the dates and times on your calendar now. Bring family and friends, a picnic dinner and a bottle of wine down to the *Confluence Park Amphitheatre*, and treat yourself to three evenings of great music at one of Denver's most beautiful concert sites.

Our "Friends of the River" Party for 1985 has tentatively been set for Sunday, Sep-

tember 8th at 4:00 p.m. Please mark the date on your calendar, and once the date is confirmed you will be notified.

This annual celebration pays tribute to the special friends of the Platte River Greenway. Cocktails, music, and a marvelous picnic style dinner are all part of the evening, with the highlight being the presentation of the 1985 "Friends of the River" Awards. The awards are given each year to any such individual or organization making an extraordinary contribution toward the enhancement of the Greenway. If you have a candidate in mind as a potential recipient of a "Friends of the River" Award, please send your suggestion to the Greenway Foundation for consideration by the Board of Directors. Your suggestions must be received by July 1, 1985.

UFM Services Donates Trees for the Greenway

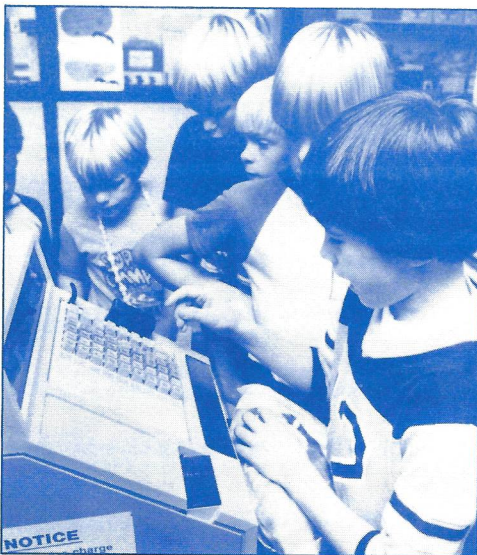
UFM Services is a non-profit, human services organization founded 20 years ago to meet the immediate needs of those affected by the Platte River Flood. Their programs work to improve the living conditions of individuals and families through the development of independence and self-esteem.

As part of the commemoration of their 20th Anniversary, UFM Services is scheduling a major Public Service Project for June 15th. The goal of the project is to restore a part of nature swept away by the Platte River Flood 20 years ago. In

conjunction with the Greenway Foundation, UFM Services will plant a variety of 50 shade trees along two sections of the Platte River Greenway. Habitat Park will be the recipient of 35 shade trees as well as host to the dedication on June 15th at 10:00 am. The area north of Confluence Park, along Grinnel Court, will receive the remaining 15 trees.

For the past 20 years, UFM Services has offered aid to needy people, and is now proud to be working with the Greenway Foundation to restore beauty and nature to our city.

The Children's Museum (For Kids Like You)



The Children's Museum of Denver located along the Platte River Greenway in its new, bright green and maroon building is a nationally acclaimed learning environment dedicated to fostering discovery among children and adults by playful exploration.

"Please touch" embodies the philosophy of this unique Museum. Among some of the exciting hands-on exhibits are:

- *The Ballroom*, where kids can jump in and tunnel under 80,000 plastic balls.
- *Face Painting*, which invites children to sit inside a circus tent and using water soluble crayons, create new faces.

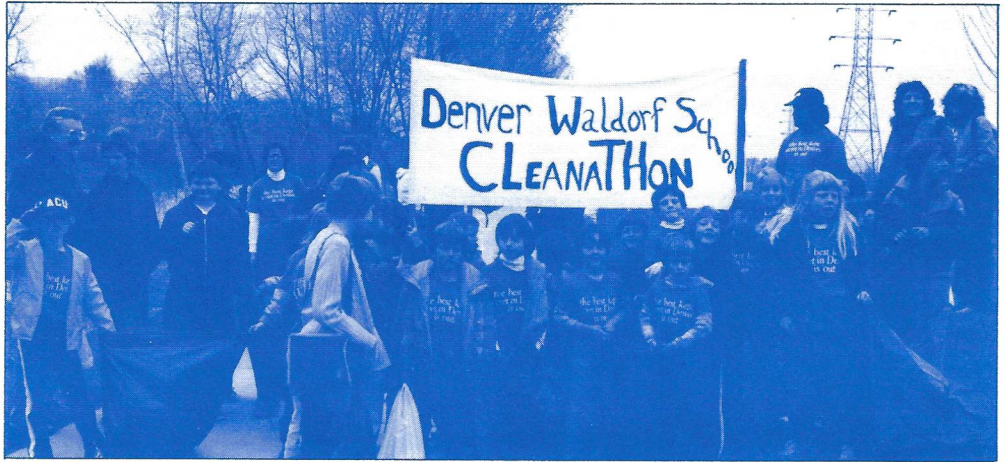
- *The Safeway Store*, where a child can play checker, stocker, sorter inside a mini-grocery store.

- *Urban Wildlife* which teaches children how to locate and recognize the animals that live in the Platte River environment.

Despite the Museum's eye-catching building and its national fame, the Children's Museum still caters to its most valued audience – children.

The Museum is open to the public every day EXCEPT MONDAY. \$2.25/person admission is charged. Under 2 free. For further information call the Museum at 433-7433/7444.

Volunteer Clean-A-Thons Continue



It's time for the Denver Waldorf School's Second Annual Clean-a-thon of the Platte River Greenway. On Saturday, May 11, 1985 (rain date - May 18), students from the Denver Waldorf School will spend the day cleaning the banks and pathways of a 10-mile stretch along the Platte River Greenway. The goal of this community service project is to restore the park to its natural beauty for the enjoyment of park users during the warm months ahead—and to raise \$15,000 for The Denver Waldorf School Building Fund.

Last year, more than 150 students, teachers and parents participated in this extremely successful event—a winning combination for the Platte River Greenway and for the School. Students gathered more than 200 bags of litter and raised more than \$8,000.

All monies raised will go into The Denver Waldorf School Building Fund for the purchase of the school at 735 East Florida Avenue. For more information, call 777-0531.

On Saturday, April 20th, an extensive clean-a-thon was held along the Platte River Greenway, courtesy of the Colorado Federation of Garden Clubs, as well as a host of dedicated young people, their parents, and group leaders.

As part of the kickoff of "Clean Denver" Week, the entire River, from Littleton to Adams County, was given a thorough "spring cleaning", resulting in the collection of several hundred bags of litter.

After a morning of hard work, the approximately 500 volunteers met at Gates-Crescent Park, home of the new Children's Museum, for a complimentary lunch courtesy of Keep Colorado Beautiful, Inc.

A brief ceremony was then held thanking the various Girl Scouts, Boy Scouts, Campfires, and other young people involved for their time and effort in helping keep the Greenway in top notch condition. In addition, the Greenway Foundation expressed its gratitude to the Colorado Federation of Garden Clubs for their coordination of the event, to Keep Colorado Beautiful, Inc. for providing lunch and also for their donation of ten new concrete trash receptacles placed along the Greenway, and finally to all those connected with "Clean Denver" for their assistance and promotion of this highly successful event.



The 1985 Great Relay Race ... 20 Years After the Flood

On June 16th, 1965, the cloudy skies presented a foreboding feeling along the Front Range of the Rockies. It had been raining for many more days than normal in Denver and some concern was beginning to be expressed for the ability of the ground to absorb anymore water in the already saturated soil. The newscast at 4:00 P.M. suddenly announced an outlandish possibility – particularly to old time Denverites who always knew that such rain storms would always be dried up by the high altitude sun ... the outlandish possibility was that a wall of water might be proceeding down Plum Creek, into the South Platte River and would arrive in mid town in the evening.

The upstream conditions were similar to the Platte Valley, only worsened by the volume of the moisture and convergence of run off from the winter snows. All of the Platte River's tributaries were swollen and rising ... Bear Creek, Cherry Creek, Sand Creek ... all flowing into the Platte. Pretty soon the radio and television reports took on a frantic note as the 'outlandish' predictions were, in fact, coming true. The usually calm South Platte River was now expected to carry this wall of water and virtually split the city of Denver in half on either side of the River's swollen banks.

The rest is now history – twenty years of history. At approximately 7 P.M. on that same evening, some 150,000 cubic feet per second of water (cfs) rolled through Denver – three times the volume as the Colorado River in the Grand Canyon at flood stage. The River began its northern surge taking out virtually every bridge, trailer, house, car and anything else in its path that could not contain its force. The resultant flood of 1965 piled up refuse and some \$350,000,000 worth of damage – with miraculously no loss of life.

The flood of 1965 turned around the future of the South Platte River Valley. After the flood, there was a great outcry to DAM THE PLATTE and prevent any other possibility of another 100 year flood. That lead to efforts to not only curb the flood potential of the River, but to let this flood control also act as the beginning of the revitalization of the Platte through the efforts of the Platte River Greenway Foundation.

THE GREAT RELAY RACE OF 1985 celebrates the incredible dedication and



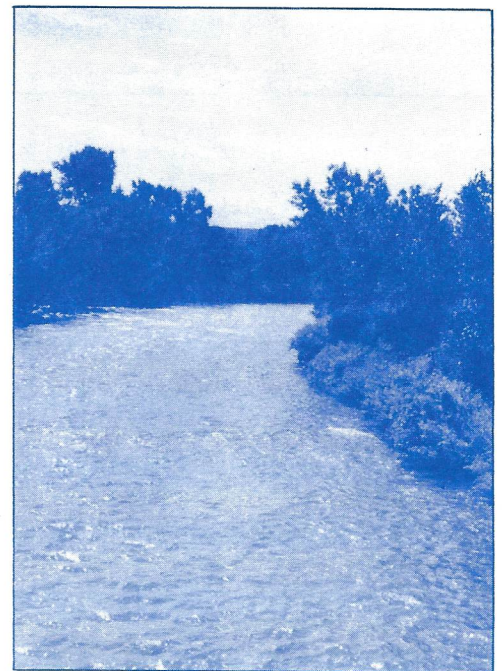
farsightedness utilized by those responsible for this restoration. ON THE MORNING OF JUNE 23, 1985, corporate, family, and Super Star teams will traverse the recreational corridors of the South Platte River and celebrate the revitalized riverbanks, parks and trail. Four individual races, beginning at Chatfield State Recreation Area (South), Barr Lake State Recreation Area (North), Kipling and Hampden (Bear Creek), and Cherry Creek State Recreation Area (Cherry Creek) will all end up at the finish line at 15th street and the Platte CONFLUENCE PARK at 12 noon.

Excellent sponsors for the 6th Annual Great Relay Race include:

- Lite Beer by Miller
- The Colorado Lottery
- KBPI/KNUS Radio Stations
- UFM Services

A percentage of the proceeds of the race has always gone to the Platte River Greenway Foundation for continued development and maintenance of the project, and this year is no exception. Some 1,000 competitors will travel via bikes, roller skates, wheelchairs, kayaks, rafts, canoes and also run and walk their way to Confluence Park. Music, good food and free drinks will await the competitors.

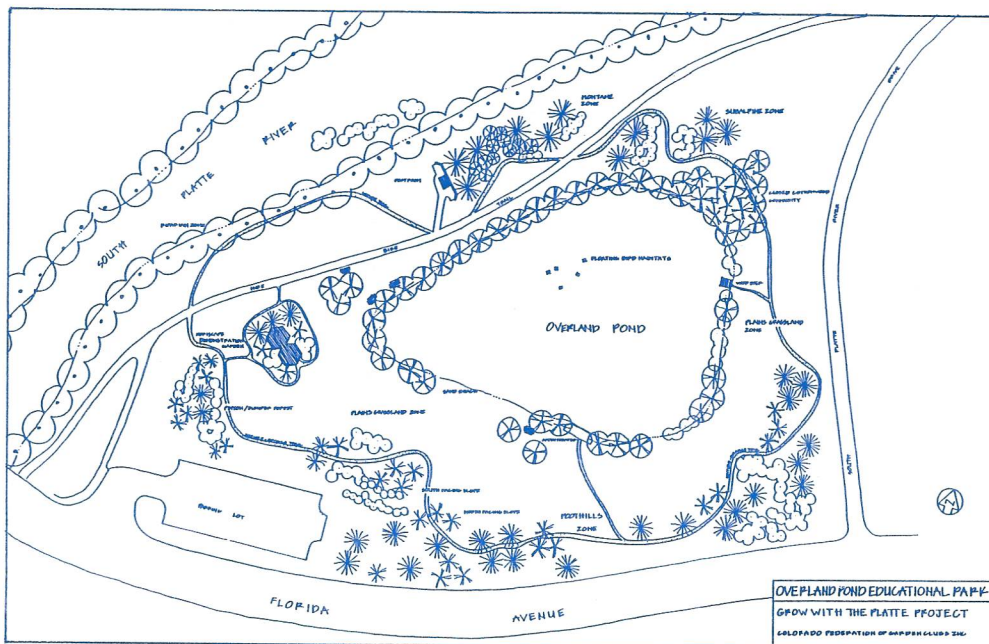
For information about putting together or participating on a team, call the Mason Consulting Group (race organizers) at (303) 753-9077. Prior to the first of April, some 25 teams have already registered for the event! The teams are being handled on a first come first serve basis for the race course of their choice. Come help us celebrate – See what "20 Years After the Flood" has brought to the South Platte River Valley!



Overland Pond Educational Park

The Colorado Federation of Garden Clubs, Inc. will begin the first phase of improvements at Overland Pond Educational Park this summer. This will include soil preparation, nature trails, and grass seeding. Funding for an irrigation system for the park is of primary importance. The Federation's goal is to have the sprinkling system in place this autumn.

The Federation has initiated a fund-raising campaign in order to raise the necessary funds to complete Overland Pond Educational Park. A plan is available, upon request, to those interested in helping develop the Park. Write: Mrs. Edwin Marker, 12660 East 2nd Avenue, Aurora, CO 80011.



tional Park. A grand finale picnic was held at Gates-Crescent Park for the volunteers. The "Grow With The Platte" Clean-a-thon was an official event of Clean Denver Week.

New Trash Receptacles Placed Along the Greenway

Thanks to the generosity of Keep Colorado Beautiful, Inc. the Platte River Greenway is now sporting ten new and very much needed concrete trash receptacles. Located in various new locations from 50th & Franklin south to Dartmouth and Platte River Drive, these receptacles, valued at over \$450.00 each, will be a great help in keeping the Greenway litter-free.

Our appreciation goes out to all those connected with Keep Colorado Beautiful, as well as the Parks and Recreation Dept. of Denver, whose personnel helped the Greenway Trail Rangers place the receptacles at the proper location.



Art Along the River

Plans are afloat for a summer sculpture exhibition along the Platte River Greenway between Confluence Park and Gates/Crescent Park. Dates have been tentatively set for August 1 through September 15, 1985. Permission has been granted by the City Parks and Recreation Dept., and initial funding for this exciting project is currently underway.

The exhibition itself is to be composed of sculptural works by some of Denver's leading artists in a citywide juried competition. For more information concerning this event, contact the Greenway Foundation office, or Richard Kallweit, Artistic Coordinator (292-2362).

Making the Platte a People Place Depends on You!

- 1) \$30.00 – Annual Membership for you or a friend. Included in the membership is a Membership Card entitling you to:
 - All copies of this newsletter printed in 1985.
 - Notice of upcoming special events held along the Greenway during 1985.
 - 20% discount on food and spirits for up to 4 persons at Zang's Brewing Co. (offer applies to any one evening, anytime during 1985.
 - All new members will receive a copy of our book, "Returning the Platte to the People".
- 2) \$50.00 – Commemorating Member – have a tree planted in the name of a friend or loved one (Also includes all privileges of an Annual Member).
- 3) \$250.00 – Corporate Member – includes a limited edition print by well known artist William Condit entitled "Seasons along the Platte." All prints are signed and numbered by the artist (Also includes all Privileges of an Annual Member).

THE GREENWAY FOUNDATION
1666 SOUTH UNIVERSITY BOULEVARD
DENVER, COLORADO 80210
(303) 698-1322

Non-Profit
U.S. Postage
PAID
Denver, Colorado
80202
Permit #3657

1985 Greenway Calendar of Events

Saturday, May 11th
Waldorf School Second Annual Clean-a-thon

Monday, May 20th
Start of the Summer Trail Ranger Program

Saturday, June 15th
UFM Services Tree Planting at Habitat Park

Sunday, June 23rd
The 6th Annual Great Relay Race

Wednesday, June 26th
Concert on the Green #1 at Confluence Park – 6:30-8:30 P.M.

Monday, July 29th
Concert on the Green #2 at Confluence Park – 6:30-8:30 P.M.

Wednesday, August 28th
Concert on the Green #3 at Confluence Park – 6:30-8:30 P.M.

Sunday, September 1st
End of the Summer Trail Ranger Program

Sunday, September 8th
Annual "Friends of the River" Party