

Greenway

N E W S L E T T E R

Vol. 10 No. 2

Fall 1988

1988 Friends of the River Party— Acknowledging Those Who Make a Difference!

Admist the noontime patrons at the ever popular Ironworks Restaurant located along the banks of the Platte River Greenway, the recipients of the 1988 Friends of the River Awards were joined by past winners, supportive friends and family, and the Directors and Staff of the Greenway Foundation.

Because of their extraordinary contributions of time and talent to the efforts of the Greenway Foundation, the following deserving individuals were presented with a 1988 Friends of the River Award:

Bill DeGroot - Bill served on the Greenway Foundation Board of Directors for over a decade, resigning in late 1987. As the Chief of Flood Plain Management with Urban Drainage and Flood Control District, Bill's talents, efforts, and energy were a key factor in the successful establishment of many Greenway projects.

Perry Eberhart - Perry's interest and involvement with the South Platte spans a period of over two decades. He served as one of the key players with the "Dam the Platte" effort after the 1965 flood, which resulted in the creation of Chatfield State Reservoir. Perry was also one of the leaders with S.P.A.R.C., an organization that was well known for its efforts to bring about the enhancement of the Central Platte Valley. Perry served on the Greenway Foundation Board of Directors from 1985-1987.

Carolyn Etter - Due to the many demands as one of the new managers of Denver's Park and Recreation Department, Carolyn had to resign from the Greenway Foundation Board of Directors late in 1987. During her three year tenure on the Board, Carolyn brought years of experience involving park and



Front Row (l to r): Board Members Eldon O'Neal, Joe Shoemaker - Chairman/Treasurer, Libby Kirkpatrick, Edna Doyle, Shirley Schley, Award Winner Amy Miller.

Back Row (l to r): Board Members Steve Metcalf, Bill Avery - Vice Chairman, Award Winner Carolyn Etter, Board Member Kip Stastny, Award Winners Perry Eberhart, Bill DeGroot, Bob Wham, Board Member Charles Roos.

Not Shown: Board Member Larry Ambrose.

open space preservation matters. Carolyn has been an active and leading member of the Parks People, is co-founder of Denver Urban Forest, and has contributed countless hours to many other local and state improvement endeavors.

Amy Miller - Amy served a two year tenure on the Greenway Foundation Board before resigning in early 1988 due to new found professional endeavors. As the former Assistant Director with the Children's Museum of Denver, Amy served as an important and obvious liaison on the Board, as well as offering her many personal and professional talents and efforts.

Bob Wham - Since the Greenway Foundation's Articles of Incorporation were drafted and filed with the Secretary of State in 1975 and a tax exemption was applied for and received from the Internal Revenue Service, Bob Wham has provided legal services to the Greenway Pro Bono Publico. In recent

years Bob has spent many hours of legal time to enable the Greenway Foundation to obtain a storage right in Chatfield Reservoir so as to be able to have water for annual boating events held on the River. It appears at long last that through the cooperation of the Denver Water Board, the Colorado Water Conservation Board, and the U.S. Corps of Engineers, this longstanding effort by Bob Wham will become a reality and eventually enable the Greenway to schedule more River events.

The Greenway Foundation is truly grateful to all those who give of their time, talents, and financial support, which have combined to help create the Platte River Greenway. An extra special "Thank You" is extended to the 1988 Friends of the River Award Winners for their extraordinary contributions to Denver's "Only River in Town"!

Newest Greenway Park is Christened "MILSTEIN GROVE"

After thirteen years of dedicated service as a Board Member of the Platte River Greenway Foundation, Phil Milstein reluctantly resigned from the Board in late 1987 due to a continued fast-paced and over-demanding personal and professional schedule. Mr. Milstein was an original member of the Platte River Development Committee, the predecessor of the Platte River Greenway Foundation, appointed in 1974 by Mayor William H. McNichols and Chairman Joe Shoemaker.

Philip Milstein is one of Denver's best known civic contributors. A former City Councilman and one of the founders of Downtown Denver, Inc., Mr. Milstein is also Denver's only "Living Landmark", an award presented to Mr. Milstein several years ago by the City and County of Denver.

In recognition of his many years of active involvement in the creation and development of the nationally recognized Platte River Greenway, a surprise dedication of the Platte River Greenway's newest park took place on Wednesday, July 27th. Named MILSTEIN GROVE, this new multi-acre greenspace is located between 3rd Ave. and 6th Ave. along the River, just west of I-25.

Joined by his beautiful wife Elisabeth, a variety of local dignitaries,



Mr. Philip Milstein, along with his wife Elisabeth.

and members of the Greenway Foundation Board (past and present), Mr. Milstein and supporters enjoyed a small personal ceremony, followed by a brief lunch amidst the splendor of Milstein Grove's many newly planted cottonwood trees.

The Board of Directors and Staff of the Greenway Foundation join with Mr. Milstein's countless friends and supporters in acknowledging that Milstein Grove promises to be one of the Greenway's most beautiful parks, honoring a very special and valued Friend of the River!

New Board Member

Kip Stastny is the newest member of the Greenway Foundation Board of Directors. As a native Denverite, Kip has been a long time supporter of the Greenway. Kip is a University of Colorado graduate with a B.S. in Marketing. He is currently an Account Representative for Sarns Inc./3M, which handles cardio-pulmonary products. As a Board Member, Kip will "further increase my support and involvement for the Greenway Foundation's efforts as well as the Denver Community." Kip resides in Southeast Denver with his wife Janelle and daughter Tiana. We are

honored to have Kip add his talents to the creative and dedicated Greenway Foundation Board of Directors.



The newest member of the Greenway Foundation Board of Directors, Mr. Kip Stastny, joined by his wife Janelle and their daughter Tiana.

Adams County Connection Completed

This summer, the long awaited connection between the Denver and Adams County trails along the South Platte River finally became a reality. The completion of this connection allows users to follow the South Platte River north to 78th Avenue. The South Platte River trail also links up the Clear Creek Trail which extends west to Twin Lake Park at 72nd and Broadway.

The Adams County Connection was made possible with help from the Colorado Lottery, the Colorado Division of Parks and Outdoor Recreation through the State Trails grant program, the Land and Water conservation Trust Fund, Adams County, and Denver Parks and Recreation Department. Thanks to this continued spirit of public and private cooperation, hundreds of daily Greenway trail users will enjoy this expanded amenity. Enjoy!



The Greenway Trail sign rests on the boundary between Denver and Adams County.

Colorado Youth Corps

Crystal A. Bush

This summer, Colorado Youth Corps (CYC) members assisted the Greenway Foundation with completion of several natural resource projects. Six young men, under the supervision of a crew leader, performed conservation and maintenance activities along the South Platte River. Construction of a large rock retainer wall, re-vegetation and painting of picnic tables



1988 Colorado Youth Corps Greenway Crew. (l to R) Crystal Bush, Matt Emmerling, David Howell, Alan Copeland, Jose Luis Morales and Cory Wilson.

and benches at Overland, Confluence, 3rd Avenue and Fishback Landing parks were successfully accomplished from June-August 1988.

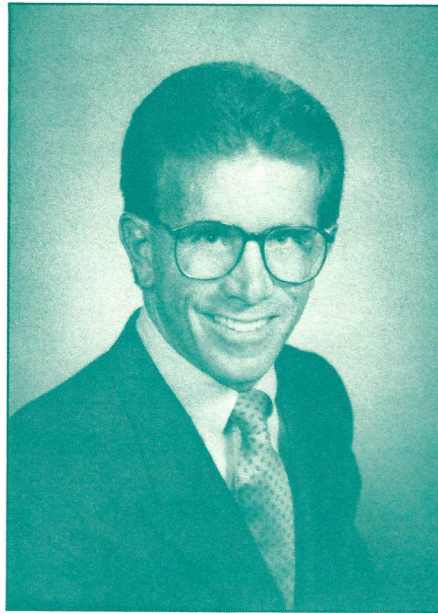
Using nothing more than bare hands and a couple of crow bars, the rock retainer wall was built in three weeks. Two truckloads of large boulders weighing approximately five tons each were dropped off at Florida Avenue and South Platte Drive to support the efforts of the crew. Most of the rocks required at least three to four youths to move them to their final resting place!

The Greenway CYC crew was one of seven crews, comprised of 16-21 year old individuals, assigned to sites in Colorado including the State Forest Service, Arapahoe and Roosevelt National Forests, and Golden Gate Canyon State Park. A pilot program of the Governor's Job Training Office (GFTO), the Corps is operated by Jefferson County Employment and Training Services.

Providing an opportunity for disadvantaged youth to labor and learn alongside people of different cultures and backgrounds is one of the Colorado Youth Corps' primary goals. The program, based in a dormitory-style environment, encourages involvement in educational classes, workshops and recreational activities. Paying above minimum wages for the hard work it requires, CYC is often the first job for many of these corpsmembers.

(Editor's note: The Platte River Greenway Foundation is very grateful to Ms. Bush and her hard working crew. Their work efforts and attitude were first rate, and these efforts helped bring about some very important improvements to the Greenway.)

EXECUTIVE DIRECTOR'S CORNER



Jeff Shoemaker

As I'm sure you'll agree, it is hard to believe that another year is coming to a close. It seems like only yesterday that the Board and I were discussing the goals of 1988. It is my pleasure to give you a brief overview of some of the activities that took place along your River this past year.

The Greenway Trail Ranger program is under the quality care and supervision of Mr. Jed Wagner, our newest Trail Ranger Supervisor. Jed's work ethic, attention to detail, and love for our River is first rate. Please take the time to read his article on page 4 of this newsletter. You will quickly see that once again the Greenway Trail Ranger program is truly one of the most important endeavors undertaken by the Foundation.

Our education program "The Greenway Experience", continues to introduce thousands of Greenway enthusiasts, young and old, to Denver's Greatest Natural Resource. Thanks to the continued "blue ribbon" efforts of Mr. Carl Crookham and his student Trail Guides, this unique indoor/outdoor learning opportunity keeps getting better and more popular every day.

This year's Great Relay Race, Denver's longest continual running event, was again a complete success. The Race featured the return of all five courses, with over 50 teams of 7-10 members dividing up the roles of runner, biker, boater, rollerskater, etc. Each year this event not only brings hundreds of participants and supporters down to the banks of the South Platte, but also results in a generous financial contribution towards our efforts. Many thanks to all the participants! See you next year!

The 1988 Concerts on the Green series was bigger and better than ever! We hosted four free concerts this year, all with a focus on Jazz. Thanks to the following sponsors, over 7000 music lovers enjoyed these one-of-a-kind FREE evenings of quality music along the banks of Confluence Park:

- The Colorado Lottery
- Mile High and Interstate Kennel Clubs
- Maxfield and Friends
- First Colorado Bank and Trust
- KMGH T.V.-Channel 7
- KADX Radio
- KHOW Radio
- Pepsi Cola Bottling Company of Denver

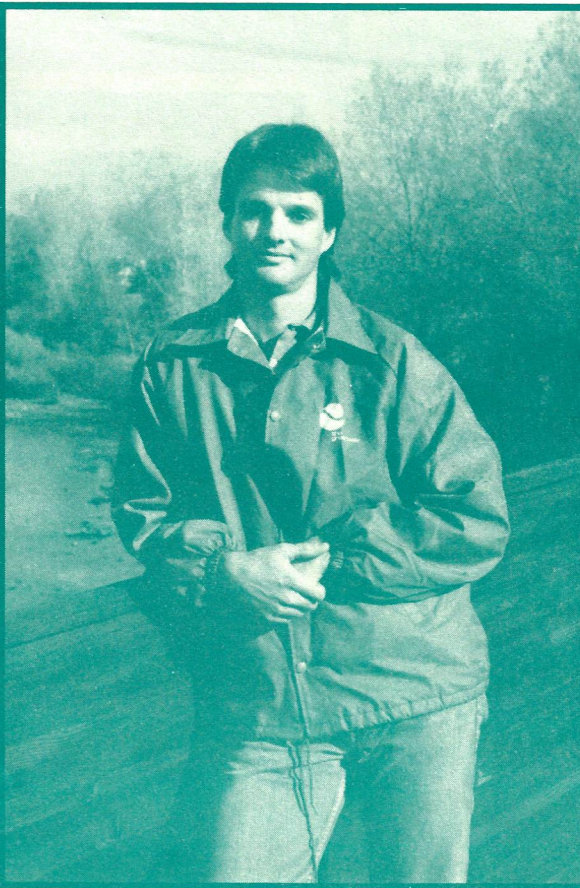
As you read through this edition of "The Greenway News", you will notice that we also dedicated a new park (Milstein Grove), received valued assistance from several conservation organizations (C.Y.C. and R.E.I.), have added a new Board Member (Mr. Kip Stastny), and all-in-all have managed to put together another action and accomplishment filled year.

It is only because of individuals and organizations like yourselves that we are able to continue our efforts to further improve, maintain, promote and protect your Platte River Greenway. On behalf of my Board of Directors, we thank you and pledge to make 1989 yet another quality year for the Platte River Greenway! In the meantime, best wishes for a joyous Holiday Season and a successful New Year!

The 1988 Greenway Trail Range



Trailrangers Wayne Crawford, Vida Urbonas, and Brian Hedrick work hard to keep the trail clean. The summer-long watering of Frog Hollow Park at 8th Avenue.



Trail Ranger Supervisor Jed Wagner.



Trailrangers install straw mat to protect newly planted wildflowers and vines.

Jed Wagner
Trail Ranger Supervisor

In April, 1988, I was hired by the South Platte River Greenway Foundation to fill the position of Supervisory Trail Ranger for the Summer South Platte River Greenway Trail Ranger program. As the newest member of the Greenway team, I will take only a moment to inform you of my past. I was born and raised in Lincoln, Nebraska (Go Big Red!). I graduated from the University of Nebraska in 1985, with a Bachelor of Science degree in natural resources. After spending two years on the east coast, I opted to return to the beloved west, and continue my career with the Greenway Foundation.

The summer of 1988 has been a real learning experience for me in terms of gaining appreciation of the Platte River, and all that the Greenway has done to make Denver a better place in which to live. The Trail Ranger

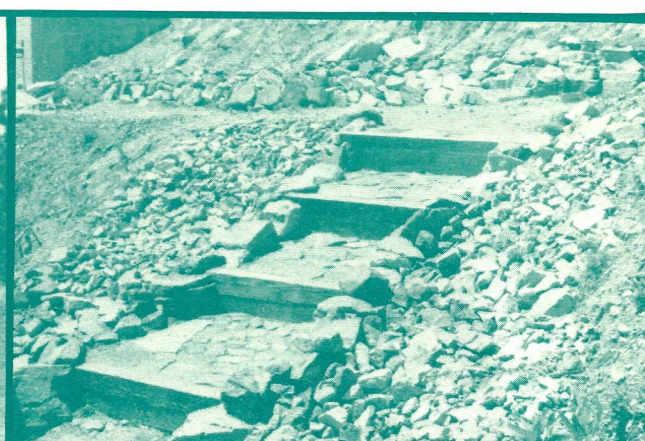
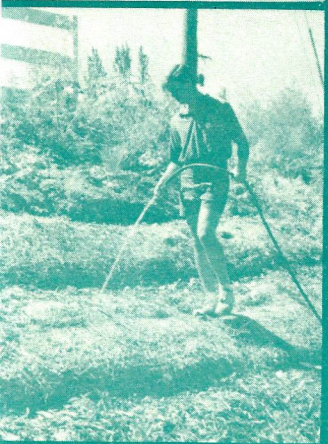
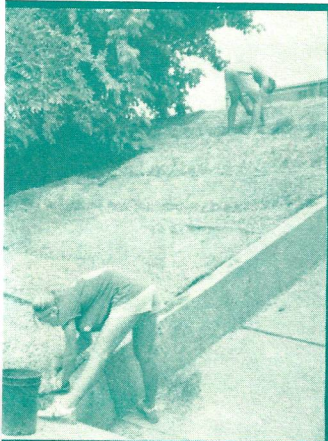
program this year, as in years past, consisted of four Rangers working seven days a week to help maintain the trail and the parks along the Platte. Working on bicycles with carts pulled behind, daily duties included picking up trash, sweeping of the trail, reporting of problems on the River, and providing Greenway users with needed information or assistance. Although these tasks in themselves are monumental, we accomplished much more than that in 1988.

This year we assisted the Denver Parks and Recreation Department with the watering of Frog Hollow and Confluence Parks. This involved the systematic setting of quick coupler irrigation heads to irrigate the turf in these two parks. Also accomplished this summer, with much help from the Colorado Youth Corps and R.E.I. Recreation Specialists, was the painting of park benches and picnic tables, the renovation of exercise equipment, and the planting of new trees along the River. A new color

scheme was added to the benches and picnic tables in six of the thirteen parks along the River, with the other parks to be completed next summer. Over 160 young cottonwood and evergreen trees were planted in three major areas along the River in Denver, as well as other revegetation sites along the Platte. In Denver, these areas included Fishback Landing, Overland Pond Educational Park, and the new Milstein Grove.

Perhaps the largest new undertaking of the Trail Ranger crew this year was a pilot project coordinated with the Urban Drainage and Flood Control District. This pilot project involved the revegetation and maintenance of four bank stabilization sites that needed help due to construction projects undertaken by the UD&FCD. This included the planting of many cottonwood trees, hundreds of willows, virginia creeper, rabbitbrush, golden willows, and wildflowers at these four sites. Not only were the plant materials installed, but the Greenway Trail Rangers spent hundreds of man hours

er Program—Doing More for Less



prevent erosion and water
es.

One of the hundreds of donated Cottonwood trees, shrubs
and wildflowers planted along the River by Greenway
Trailrangers.

Florida Avenue erosion control structure built this summer
doubles as a stairway to the River. Colorado Youth Corp
Workers scrape and paint picnic tables along the Platte.

pumping water out of the Platte River to keep these plants alive during the hot, dry summer. One of these sites was located within Denver city limits, while the other three sites are located in Adams County. In addition, this year we built two small erosion control structures at two sites along the River. One was in Adams County at our I-76 revegetation site, designed to handle runoff from a farmer's field. The other structure was at the Florida Avenue boatchute, designed to function as a set of steps as well as erosion control.

Our Trail Ranger crew expanded for eight weeks this summer, during which time we were able to receive assistance from the newly formed Colorado Youth Corps. A crew of five people, supervised by crew leader Crystal Bush, worked full-time for eight weeks this summer in conjunction with our Trail Rangers. An invaluable program, the Colorado Youth Corp helped us to accomplish much more to beautify Denver than would have otherwise been possible. Some of the

efforts undertaken by these industrious young people included the building of a large stone wall, painting of park benches and tables, planting of new trees, and picking up of trash.

1988 saw the dedication of two important amenities along the Platte: the Adams County Trail Connection, and the new Milstein Grove Park. In this park, located just south of 6th Avenue, we assisted the Denver Parks Department with several improvements including: the planting of new trees, grass seed, and wildflowers; painting of benches, tables, and irrigation boxes; weed and trash removal; and the construction and placement of the new park sign.

All in all, 1988 has been a great year for both myself and the South Platte River Greenway Trail Ranger program. If rising to a challenge is a measure of success, I believe we did just that this year. Never will we be able to banish all problems along the Platte River. To do it all, and to do it all right would require resources no one

can afford. So we, as the Greenway Foundation, more specifically the Greenway Trail Ranger program, do what we can. And what we can do is to continue our efforts, for as long as it takes, to not only remain even with the elements, but to do a little more, and make small yet very positive steps towards an even better River. We thank those of you who support our efforts, those of you who appreciate the Platte River Greenway. We strived to do more this year and we will strive to do even more next year, as we carry on in the finest of the Greenway Foundation's tradition, the Greenway Trail Ranger program.

*"A
river
is more than
an amenity
it is
a
treasure"*
Justice Wm. O. Douglas

er Program—Doing More for Less



prevent erosion and water
es.

One of the hundreds of donated Cottonwood trees, shrubs
and wildflowers planted along the River by Greenway
Trailrangers.

Florida Avenue erosion control structure built this summer
doubles as a stairway to the River. Colorado Youth Corp
Workers scrape and paint picnic tables along the Platte.

pumping water out of the Platte River to keep these plants alive during the hot, dry summer. One of these sites was located within Denver city limits, while the other three sites are located in Adams County. In addition, this year we built two small erosion control structures at two sites along the River. One was in Adams County at our I-76 revegetation site, designed to handle runoff from a farmer's field. The other structure was at the Florida Avenue boatchute, designed to function as a set of steps as well as erosion control.

Our Trail Ranger crew expanded for eight weeks this summer, during which time we were able to receive assistance from the newly formed Colorado Youth Corps. A crew of five people, supervised by crew leader Crystal Bush, worked full-time for eight weeks this summer in conjunction with our Trail Rangers. An invaluable program, the Colorado Youth Corp helped us to accomplish much more to beautify Denver than would have otherwise been possible. Some of the

efforts undertaken by these industrious young people included the building of a large stone wall, painting of park benches and tables, planting of new trees, and picking up of trash.

1988 saw the dedication of two important amenities along the Platte: the Adams County Trail Connection, and the new Milstein Grove Park. In this park, located just south of 6th Avenue, we assisted the Denver Parks Department with several improvements including: the planting of new trees, grass seed, and wildflowers; painting of benches, tables, and irrigation boxes; weed and trash removal; and the construction and placement of the new park sign.

All in all, 1988 has been a great year for both myself and the South Platte River Greenway Trail Ranger program. If rising to a challenge is a measure of success, I believe we did just that this year. Never will we be able to banish all problems along the Platte River. To do it all, and to do it all right would require resources no one

can afford. So we, as the Greenway Foundation, more specifically the Greenway Trail Ranger program, do what we can. And what we can do is to continue our efforts, for as long as it takes, to not only remain even with the elements, but to do a little more, and make small yet very positive steps towards an even better River. We thank those of you who support our efforts, those of you who appreciate the Platte River Greenway. We strived to do more this year and we will strive to do even more next year, as we carry on in the finest of the Greenway Foundation's tradition, the Greenway Trail Ranger program.

*"A
river
is more than
an amenity
it is
a
treasure"*

Justice Wm. O. Douglas

The Greenway Wildlife Watch

Merle D. Grimes
Greenway Project Director

As the fall season settles in, with winter soon to follow, South Platte River visitors enjoy one of the best times of year to observe wildlife along their River.

Migratory fowl are beginning their long trek to warmer climates in the south. Along the way, many species seek refuge and food within the wooded shores of the South Platte River. Cold, stormy weather provides excellent opportunities for bird observation. Many fowl prefer to settle along the River and conserve energy rather than flying during the storm. Refer to the Spring, 1988 Greenway Newsletter for additional hints to improve your bird watching success.

ANIMALS TO WATCH

In addition to our winged friends, you may observe an increase in activity of muskrat and beaver, two common rodents who reside along the South Platte River.

These animals are well suited to life along the River. Their tails, structured to aid in swimming, are very different from one another. The muskrat tail is flat on the vertical axis while the beaver's tail is flat on the horizontal axis. In either case, both rodents are very adept swimmers.

During the fall, and before the winter winds bring snow, the muskrat and beaver are busy collecting food for the long months ahead. Both have specialized front teeth, a characteristic of rodents. The long, sharp teeth enable them to cut branches and limbs and strip nutritious layers of bark from the plants for food. Often times, the beaver will cut down trees reaching two feet in diameter. Once the tree has fallen, the smaller, softer limbs are harvested and moved to a location near the beaver's den for storage.

The beaver is best known for their dam building capabilities. The dams are built to create a deep pool of water that will not freeze solid during cold weather. Under the ice, the beaver can move about safely to food storage areas or to repair leaks in the dam.



"In recent years, the beaver population on the South Platte River has increased, due to the much improved water quality and more abundant vegetation."

Since the South Platte River does not freeze solid during the winter, there is no need for the beaver to build dams. Instead they burrow into the river banks, usually beneath the roots of trees. Their entry to the den is below the water level and protected by a roof constructed of sticks patted into place with mud by using their flat tail as a tool. The underwater entry structure is connected to the river bank and may extend into the water for up to five feet.

Located near the den is the food storage area called the food cache. The cache looks similar to the den entry and may even be associated with an abandoned or seldom used den. The food cache, made up of harvested twigs, is secured beneath the water so that strong river currents cannot wash it away.

During the winter the life long

mated pair of beaver conceive their offspring, usually giving birth to two kits in late winter. Older kits from the previous year will be forced away from the den to search for their own shelter and mates.

In recent years, the beaver population on the South Platte River has increased, due to the much improved water quality and more abundant vegetation, both a result of the Greenway Foundation's efforts. In addition, thousands of willows have been planted to provide a self generating food source. Large cottonwood trees have been wrapped with chicken wire to protect them while weak, non-desirable trees are left for beaver harvest. We are proud of our efforts and success in preserving this precious and unique creature.

The Greenway Experience

"Kids learning about the South Platte River's history and environment is what it's all about."

CHILDREN'S LETTERS FROM THE GREENWAY EXPERIENCE.

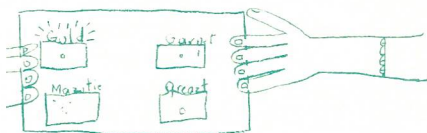
Dear Pat,
I thought the field trip was one of my best. I liked the gold panning the most but I did not find any gold. But I did find quartz agate and one grain of magnetite. But I also found one green worm which Louis smashed and I fed mosquito larvae which Louis panned also. I found out that the spruce trees sharp points are really sharp. I also found out about stars in the trees. And one again I say that it was one of my best field trips.

Sincerely,
Jenny Sharp

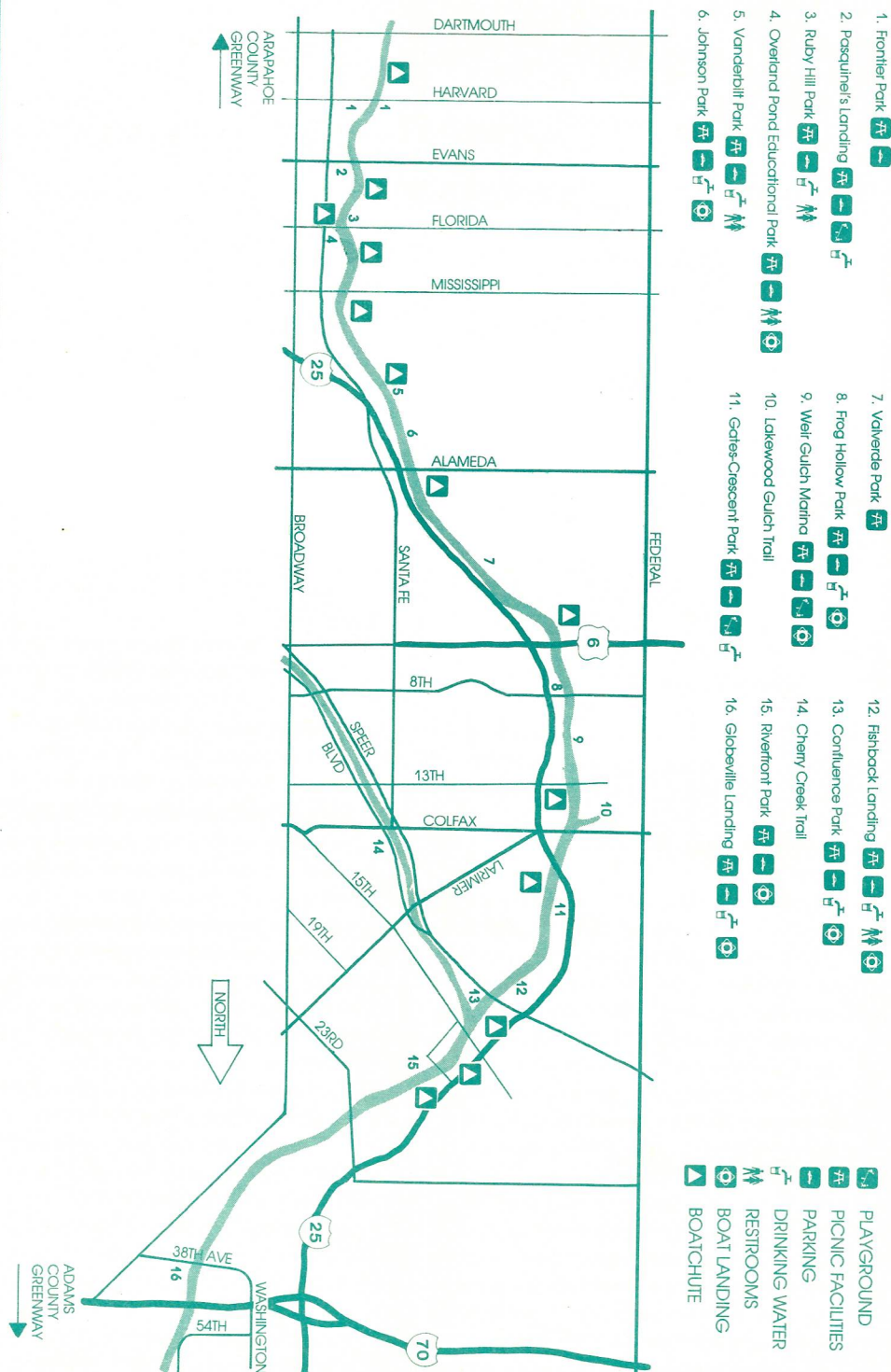
Oct 12, 1982

Dear Pat,
I like the field trip it was fun. I was near where I find the gold. I thought that the secret of the stars plus the secret of the pine was next to I enjoy learning the things about the South Platte River.

Your friend,
Jenny Jutz



GREENWAY TRAIL MAP



BOARD OF DIRECTORS

Joe Shoemaker
Chairman/Treasurer

Bill Avery
Vice Chairman

Larry Ambrose
Edna Doyle
Libby Kirkpatrick
Steve Metcalf
Eldon O'Neal
Charlie Roos
Shirley Schley
Kip Stastny

Federico Peña
Mayor of Denver
Jeff Shoemaker
Executive Director
Merle Grimes
Project Director

Your Support Makes the Difference!

ANNUAL MEMBERSHIP

\$30.00 for you or a friend.

Included in the membership is a Membership Card entitling you to:

- Notice of upcoming special events held along the Greenway during the year.
- All new members will receive a copy of our book "Returning the Platte to the People".
- A 20% discount on food and spirits for up to 4 persons at Zang's Brewing Co. (offer applies to any one evening anytime during that year).
- All copies of the newsletter printed in the year you are a member.

COMMEMORATING MEMBER

For \$100.00, have a contribution made towards the Greenway Tree Fund in the name of a friend or loved one. (Also includes all privileges of an Annual Member).

CORPORATE MEMBER

\$250.00 includes a limited edition print by well known artist William Condit entitled "Seasons Along the Platte." All prints are signed and numbered by the artist. (Also includes all privileges of an Annual Member).



South Platte River Greenway Foundation Inc.
1666 South University Boulevard
Denver, Colorado 80210
(303) 698-1322

Non-Profit
U.S. Postage
PAID
Denver, Colorado
80202
Permit #3657