

Greenway

N E W S L E T T E R

Vol. 13 No. 2

Fall 1991

Coors Pure Water 2000 Returns To The River

For the second consecutive year, Coors Pure Water 2000 effort has organized a dedicated cadre of volunteers to help clean the banks and waters of the Platte River Greenway. Co-sponsored by KWGN-TV/Channel 2, this cooperative effort resulted in dozens of bags of litter, as well as a variety of larger items, being removed from the banks and waters of the South Platte River.

The cleanup took place in two areas along the River: from 8th Ave. north to Confluence Park and from Florida Ave. north to Alameda Ave. This encompasses over a four mile stretch of the Greenway. Volunteers of all ages

gave up part of their Labor Day weekend to make the Greenway even greener. The largest group of volunteers were officers and enlisted personnel from Lowry Air Force Base, who also provided the trucks that were used to haul away the trash collected by the volunteers.

In addition to the cleanup project, Coors Pure Water 2000 presented the Greenway Foundation with a donation of \$2,500 to assist in our efforts to further improve Denver's "Only River in Town".

Our thanks go out to the scores of volunteers who made a true difference to our River, as well as

to Coors Pure Water 2000 for their ongoing support of the Greenway Foundation.



Hard working volunteers like these removed over 100 bags of litter and other debris from the banks of the South Platte.



Eldon O'Neal (second from left) is presented with a \$2,500 donation from Coors Pure Water 2000 by project coordinator Bob Cardenas (second from right) of Coors Distributing Company. Also featured are Col. James Watt of Lowry Air Force Base (far left) and Ed Peterson with Coors (far right).

Cherry Creek South Greenway Moves Closer To Castlewood Canyon State Park

Merle D. Grimes
Greenway People, Inc.

Construction has begun on the Douglas County stretch of the Cherry Creek South Greenway. A 3/4 mile section has been completed that extends the trail southward from the Town of Parker's border under East Stroh Road bridge. As will be the case with most of this area, this initial section is surrounded by a rural terrain, with most of the native riparian vegetation well preserved.

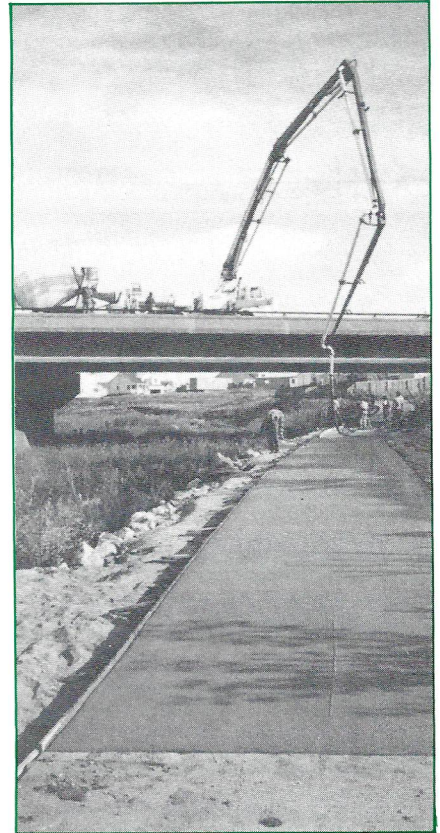
An additional four mile section of trail has been graded and the abutments for two more pedestrian bridges should be in place by the end of the year. The actual construction of the concrete and adjoining equestrian trails will take place next spring and summer, along with the placement of the two bridges.

The Greenway Foundation has also been meeting with representatives from the City of Aurora and Arapahoe County, and

is hoping to begin construction of trail along this 4.5 mile section this coming year. When completed, this section will connect the Town of Parker and Douglas County reaches with Cherry Creek State Recreation Area.

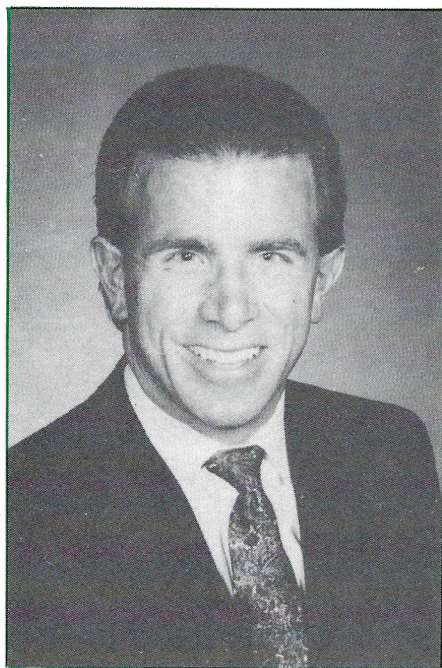
During this past summer, the E-470 trail was completed, including the connection to the Cherry Creek South Greenway. This trail also connects with the previously constructed C-470 trail, which now connects with the Platte River Greenway adjacent to Chatfield State Recreation Area.

It is our hope to see the completion of the Cherry Creek South Greenway within the next two years. This newest addition to the metro area trail system will serve as the mechanism that connects three of Colorado's finest State Parks: Castlewood, Chatfield, and Cherry Creek, further solidifying Colorado's position of having the premier trail system in the United States.



Two different views of the newly laid concrete bike path as it travels along Cherry Creek under the East Stroh Road bridge.

DIRECTOR'S CORNER



Jeff Shoemaker
Director

Dear Friends:

This has been an exciting and productive year for your Platte River Greenway Foundation.

Progress continues to occur along the Cherry Creek South Greenway in Douglas County. As you can see from the related article on page 2, additional trail has been put in place, and over four miles of grading, along with the placement of the abutments for four new pedestrian bridges, will be completed by year's end. The actual trails, both hard surface and equestrian, will be completed next year, as will the placement of the four bridges.

The Second Annual Original Denver Duck Race was held along the banks of Cherry Creek, adjacent to the new Cherry Creek mall. Thousands of plastic yellow ducks floated along the creek with hundreds of enthusiastic "owners" urging them on to victory. Hosted by the Active 20/30 Club, a non-profit charity dedicated to helping children, this unique and fun-filled

event will benefit the Greenway Foundation, the Colorado Christian Home, the Denver Boys, Inc., and the Denver Girls, Inc.

Overland Pond Educational Park is the home of a brand new fishing dock, handicap accessible of course, as well as a deeper pond which will allow the pond to sustain a larger and better supply of fish. The Colorado Division of Wildlife will periodically stock the pond when different special events occur at the Park. These improvements have been made possible due to the generosity of the Denver Foundation, the Division of Wildlife's Fishing is Fun program, the Active 20/30 Club, and Coors Pure Water 2000.

The Foundation entered into a cooperative relationship with the Denver Rail Heritage Society, the organization behind bringing the Trolley to the banks of the Greenway. With our help and that of many other organizations and individuals, the Platte River Trolley is traveling up and down the banks of the River, offering its riders the chance to experience a bit of transportation history, while viewing the beauty of the Platte River Greenway.

And as always, our pride and joy continues to be the Greenway Experience. This year, our unique indoor/outdoor educational opportunity expanded into three new host schools, which allowed over 15,000 elementary school children to learn all about the beauty of the Greenway, as well as its history and future. The youngsters also come away from the four-park, half-day tour understanding that the preservation and protection of the River and its surrounding area is in their hands.

Finally, we have begun to meet with a variety of public and private entities to discuss a proposal from the Greenway Foundation to make Cherry Creek in downtown Denver a boatable waterway. This endeavor can occur in a manner that will be both personally and ecologically positive, and can be a

true downtown Denver attraction that will garner national attention. As progress occurs, you will be brought up to date.

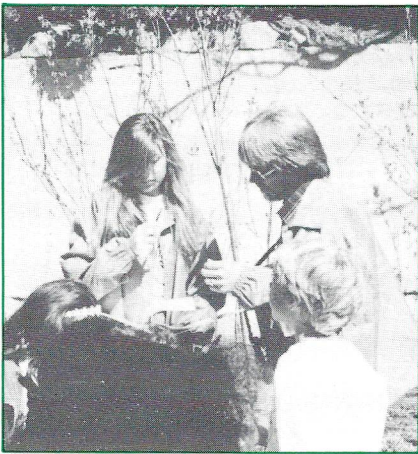
As always, it is important for you, our members, to understand that without your support, none of our efforts would be possible. We are not a large foundation, but the efforts we undertake are accomplished in an effective and efficient manner. We like to think that what we do, we do right!

If you have any questions or suggestions related to those efforts, I hope you will contact my office directly. In the meantime, on behalf of my Board of Directors, best wishes for a happy, safe holiday season and a prosperous 1992.

Fall Scenes With The Greenway Experience

Carl Crookham
Greenway Experience Coordinator

For a number of issues, we have been telling you a lot of exciting things about The Greenway Experience tour program. We have usually included a picture or two. Since the success of the program is the wonderful interaction between the teen tour guides and the children, we have decided to let the pictures tell the story.



Near the Forney Museum, North High teacher Paul Cox and a teen guide plan their next tour stop while students finish a workbook page.



Metro High's Michelle Leyva, head tour guide, gathers her class around a planter at Confluence Park to teach them some secrets about using their noses.



Teen guide Anthony Lucero kneels to second grade level and teaches a lesson about the Platte, while Rodney Beavers and Lee Gordon act it out.



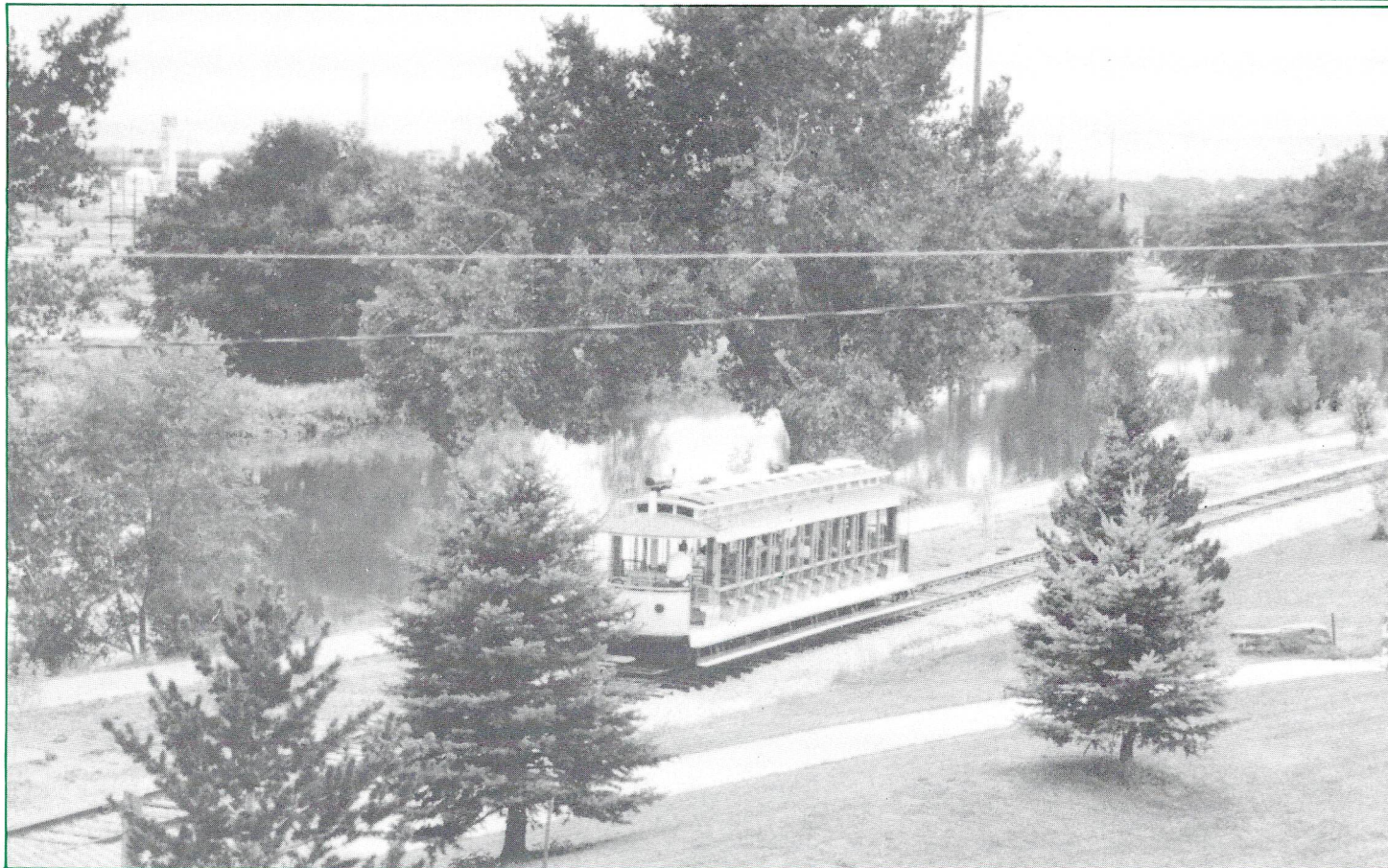
"S.S.S.-Spruces are square and sharp". Brian Bradley and Valerie DeGarmo, from Lincoln High, help 5th graders learn to tell their Christmas trees apart at Frontier Park.



Teen tour guide Jay Law, from Lincoln High, helps a student clean off an old pick they just dug from a mock archeologic pit at the ghost town site just south of Evans.



Greenway Experience tour guide Bernadette Reyes from Metro High presents a lesson on railroad history to a second grade class.



Take advantage of the discount coupon on page 7 and experience a fun-filled excursion on the Platte River Trolley as it travels along the Greenway.

Greenway Foundation Helps Keep Trolley On Track

Rick McNeal, Director
Platte Valley Trolley

The Platte Valley Trolley, operated now for three years by the Denver Rail Heritage Society along the Platte River Greenway, was threatened early this past summer when the trolley operators had to raise funds to purchase the Westside track along the Greenway or risk having the track pulled up as others negotiated the future of the land under the track. The Burlington Northern Railroad offered the track to DRHS at salvage value, providing DRHS raise purchase monies by May 31, 1991.

The Greenway Foundation issued a grant to DRHS which also raised monies from the Rocky Mountain Railroad Club, the City & County of Denver, DRHS Board Members and others. Several of the DRHS members are AT&T retirees and matching funds were

obtained from the AT&T Foundation. DRHS is currently negotiating for additional funding from the Regional Transportation District that will further ensure the continuance of Trolley service along the Greenway and west through Lakewood Dry Gulch to Sheridan Boulevard for the years to come.

Two items high on the list of priorities for the remainder of 1991 and 1992 are the purchase of the "Seeing Denver" Trolley Car #1977 which DRHS has been leasing from the manufacturer, GOMACO Trolley Company of Ida Grove, Iowa, and the building of a car barn to house and protect Car #1977 and other trolleys while they are being restored for future trolley service along the Greenway and in Lower Downtown.

The capital improvements program goal for 1991/1992 is \$550,000. The Gates Foundation has issued a challenge to Denver Rail Heritage Society. Platte Valley

Trolley is busy looking for matching funds as the Trolley winds down its operation for the Winter months and prepares for the 1992 season.

The "Seeing Denver" Trolley, being an open car, does not lend itself to scheduled winter operation for other than the hearty. Bronco shuttles are operated for the home Bronco games. Others interested in winter outings on an open Trolley can make believe that they are on an old-fashioned hayride or sleigh ride and charter the Trolley for parties, groups and family reunions.

A new "High Noon Trolley Trip" was initiated during September and plans are being made to commence Spring 1992 operation featuring the "High Noon Trolley Trip" with optional special lunches at restaurants near the Trolley stops along the Platte River Greenway. The one-hour, six-mile round-trip "High Noon Trolley Trip" is especially

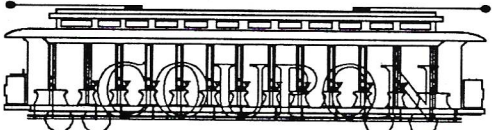
attractive to senior citizens, day care centers and others looking for noontime diversions.

If you have not taken a ride on the Platte River Trolley, you are in for a real treat on this new amenity in the Central Platte Valley. The Trolley is a wonderful addition to the Greenway that affords one the opportunity to relax and enjoy fall colors, spring flowers and summer breezes as the Trolley rolls along the South Platte River from Confluence Park and 15th Street south to Old West Colfax and west up through Lakewood Dry Gulch to Sheridan Boulevard on old Denver Tramway Tracks now owned by the RTD.

Denver Rail Heritage Society is a non-profit 501(c)3 and the Trolley is operated by a 100% volunteer force of members. The Trolley is administered by an Executive Director and a small operations staff. Volunteers are also working on reinstalling track between 15th and 16th Streets with the hopes that Trolley operations might be extended north to the Historic 19th Street Bridge in 1992.

Long-range plans call for the extension of Trolley operations across the Platte River and into Lower Downtown to the new Coors Baseball Park. Another phase of expansion calls for Trolleys running between an extended 16th Street Mall and the new Elich Gardens.

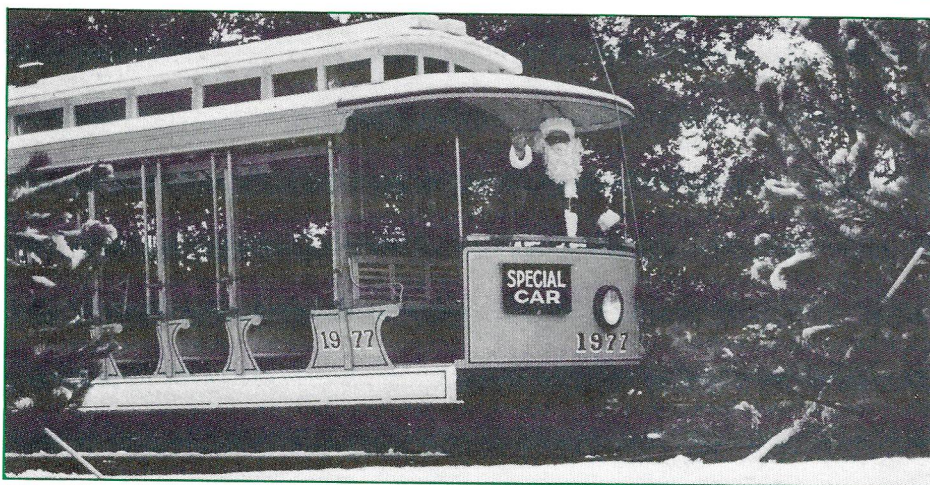
Denver Rail Heritage Society

\$1 off  **\$1 off**

Platte Valley Trolley

with purchase of second ticket at regular price

Trolley Stops at: 15th Street, Forney Museum, Confluence Park, 7th Street and Children's Museum along the South Platte River. Exit 211 at 23rd Avenue & Water Street off I-25



"Santa" checks out an alternative to his sleigh while encouraging you to give a unique holiday gift to a friend or family member via a membership to the Denver Rail Heritage Society.

Denver Rail Heritage Society and the Platte Valley Trolley are looking for new members, volunteers and donations to expand the Trolley operations,

purchase Trolleys, build a car barn and eventually electrify the line.

For more information, call Rick McNeal, Executive Director, Platte Valley Trolley at 458-6255.

**JOIN IN THE FUN AND THE EXPERIENCE! VOLUNTEER NOW,
RUN THE TROLLEY, HELP IN THE TROLLEY OFFICE**
Full Scale, Real Life Opportunity, Operating Denver's Second Century of Rail Transportation

JOIN DENVER RAIL HERITAGE SOCIETY TODAY

a Colorado non-profit corporation

Learn more about the Central Platte Valley and our plans for future projects including:
Trolley Expansion to Lower Downtown, The Moffat Station,
Cherry Creek Bridges, Union Pacific Freight House

_____ Yes, I want to join D.R.H.S. _____ Yes, I want to Volunteer for _____
_____ \$15 Individual _____ \$25 Family _____ \$50 Sustaining _____ \$100 Donor
_____ \$250 Friend _____ \$500 Patron _____ \$1000 Corporate and Benefactor
_____ Not interested in joining, but here is a donation to the Trolley Fund.

Name _____ Phones: Home _____ Work _____
Address _____ City _____ State _____ Zip _____

Denver Rail Heritage Society, 2200 7th Street, Denver, Colorado 80211 Phone: 458-6255

BOARD OF DIRECTORS

Joe Shoemaker
Chairman/Treasurer

Bill Avery
Vice Chairman

Larry Ambrose
Edna Doyle
Larry Elrod
Steve Metcalf
Jerome & Cynthia Nagel
Eldon O'Neal
Paul O'Rourke
Charlie Roos

Jeff Shoemaker
Director

Your Support Makes the Difference!

ANNUAL MEMBERSHIP

\$30.00 for you or a friend.

Included in the membership is a
Membership Card entitling you to:

- All copies of the newsletter printed
in the year you are a member.
- All new members will receive a copy
of our book "Returning the Platte to
the People".

COMMEMORATING MEMBER

For \$100.00, have a contribution made
towards the Greenway Tree Fund in
the name of a friend or loved one.
(Also includes all privileges of an
Annual Member).

CORPORATE MEMBER

\$250.00 includes a limited edition print
by well known artist William Condit
entitled "Seasons Along the Platte." All
prints are signed and numbered by the
artist. (Also includes all privileges of an
Annual Member).



South Platte River Greenway Foundation Inc.
1666 South University Boulevard
Denver, Colorado 80210
(303) 698-1322

Non-Profit
U.S. Postage
PAID
Denver, Colorado
80202
Permit #3657



This newsletter has been printed on recycled paper